

# Central Express International Co., LTD

Pursuing excellence in global logistics since 1991



# Contents

|    |                             |
|----|-----------------------------|
| 01 | History                     |
| 02 | Vision & Core Values        |
| 03 | Commitment to Forwarding    |
| 04 | Organization Chart          |
| 05 | Facilities & Equipment      |
| 06 | Pyeongtaek Logistics Center |
| 07 | Certificate & Registration  |
| 08 | Our Strengths               |



# History



## 1991 -

- **Oct 1991**  
Company founded
- **Mar 1994**  
Registered as multi-modal transportation business to the Ministry of Transportation (No. 460)
- **Oct 1999**  
Established Busan branch



## 2000 -

- **June 2001**  
Established Incheon Int'l Airport branch
- **Oct 2006**  
Expanded the head office in Seoul
- **July 2008**  
Established the first Pyeongtaek Logistics Center



## 2010 -

- **May 2012**  
Acquired AEO Certificate from Korean Customs Service (No. KRAEO3612040)
- **Sep 2016**  
Established the second Pyeongtaek Logistics Center
- **Nov 2022**  
Expanded the head office in Seoul



# Vision & Core Values



At CEC, we strive to generate lasting value in global logistics. We have been the leading voice in domestic and overseas forwarding business.



## Safety

Handling customers' valuable cargoes with immaculate care



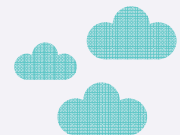
## Creativity

Thinking out of the box and acting innovatively



## Accuracy

Fulfilling duties and responsibilities with excellence



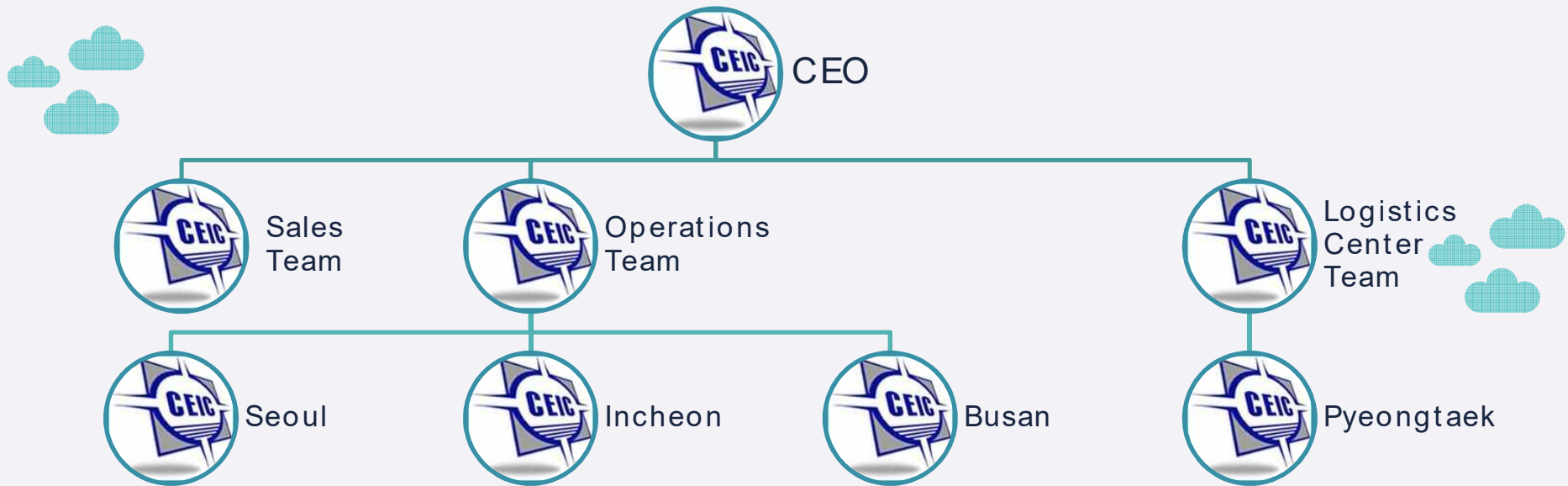
# Commitment for Forwarding



- CEC provides the optimum logistics solution for the need of our clients by using domestic branches and overseas networks.
- Valuing the trust of our clients, we put utmost effort to create a win-win relationship by fulfilling our mutual goal.
- We endeavor to follow policies for social responsibility and eco-friendliness.



# Organization Chart



# Facilities & Equipment

| Facilities                    |   | Equipment               |   |
|-------------------------------|---|-------------------------|---|
| Branch                        | Functions                                 | Type                    | Volume  |
| Head Office (Seoul)           | Administration, sales, in & out operation | Container               | 20HC X 46UNITS  |
| Incheon Airport Office        | In & out operation                        | Truck (own & chartered) | 1TON TRUCK X 10 UNITS<br>2.5TON TRUCK X 5 UNITS<br>5TON TRUCK X 7 UNITS |
| Busan Office                  | In & out operation                        |                         |   |
| Pyeongtaek Logistics Center 1 | Total warehouse service                   | Forklift (Pyeongtaek)   | 4UNITS  |
| Pyeongtaek Logistics Center 2 | Total warehouse service                   | Forklift (Pyeongtaek)   | 2UNITS  |

# Pyeongtaek Logistics Center

01

The First Center  
(bonded/  
general area)



PLOTTAGE: 6,658m<sup>2</sup>  
BUILDING: 3,259m<sup>2</sup>  
BONDED AREA: 1,200m<sup>2</sup>  
GENERAL AREA: 2,059m<sup>2</sup>

02

The Second  
Center  
(general area)



PLOTTAGE: 1,320m<sup>2</sup>  
BUILDING: 660m<sup>2</sup>





# Certificate & Registration



## AEO Certificate



## FMC Registration



# Our Strengths



**Well-  
organized  
teams**



**Skilled &  
experienced  
man power**



**Sound  
financial  
status**



**Great  
reputation in  
the market**



**Specalized in  
arranging**

Beauty & cosmetics and  
chemical products



**Competitive  
S/C**

with carriers such as HMM, MAERSK,  
COSCO, ONE, YANGMING, ZIM



# Further Business

## A. Sectors

- a. Fashion/ Furniture/ Luxury Goods(from ITALY)  
GUCCI, BALENCIA, PRADA, and Others
- b. Foods(Both Sides) / Korean Foods & Italian Foods  
Bora Trading(Korean Importer), ESSELUNGA, CONAD, and too many
- c. Medicals(Both Sides)  
Healthcare, Pharmaceutical Goods
- d. Machineries(Both Sides)  
Bakery Machines, Medical Devices, and Others
- e. Copper Tube(from Korea)  
Nungwon Metal Ind.



# Further Business

f. Works of Art(from Italy)  
With Your Finest Art Department(GONDRAND), Customized for All-Risks Guarantee

g. Auto Parts(from Korea)  
ZF Automotive, Taelim Industry

## B. Consolidation

- a. From Italy to Korea by AIR
  - b. From Korea to Italy by LCL
- AIR & LCL Consolidation for each traffic are the ultimate goods for us!



# Further Business

## C. Collaborate with FERCAM's Networks

June 1 this year, FERCAM INDIA PVT LTD is starting their operation.

With all your own networks, we can collaborate with FERCAM strongly.

<https://www.fercam.com/en-int/news-press/news/fercam-expands-to-india--15048.html>

## D. Hiring Sales-Staff to enhance Sales Performance

We are seeking for talented people through Head-hunting & personal Networks.

It'd be good if we are hiring good staff in both companies.

## E. Anything Else We Discuss



# Thanks!

## Any questions?

operation@centralx.co.kr  
+82 2 7110550  
www.centralx.co.kr

CREDITS: This presentation template was created by Slidesgo, and includes icons by Flaticon, and infographics & images by Freepik

Copyright ©2024 by Central Express Int'l Co., Ltd  
All Right Reserved.

